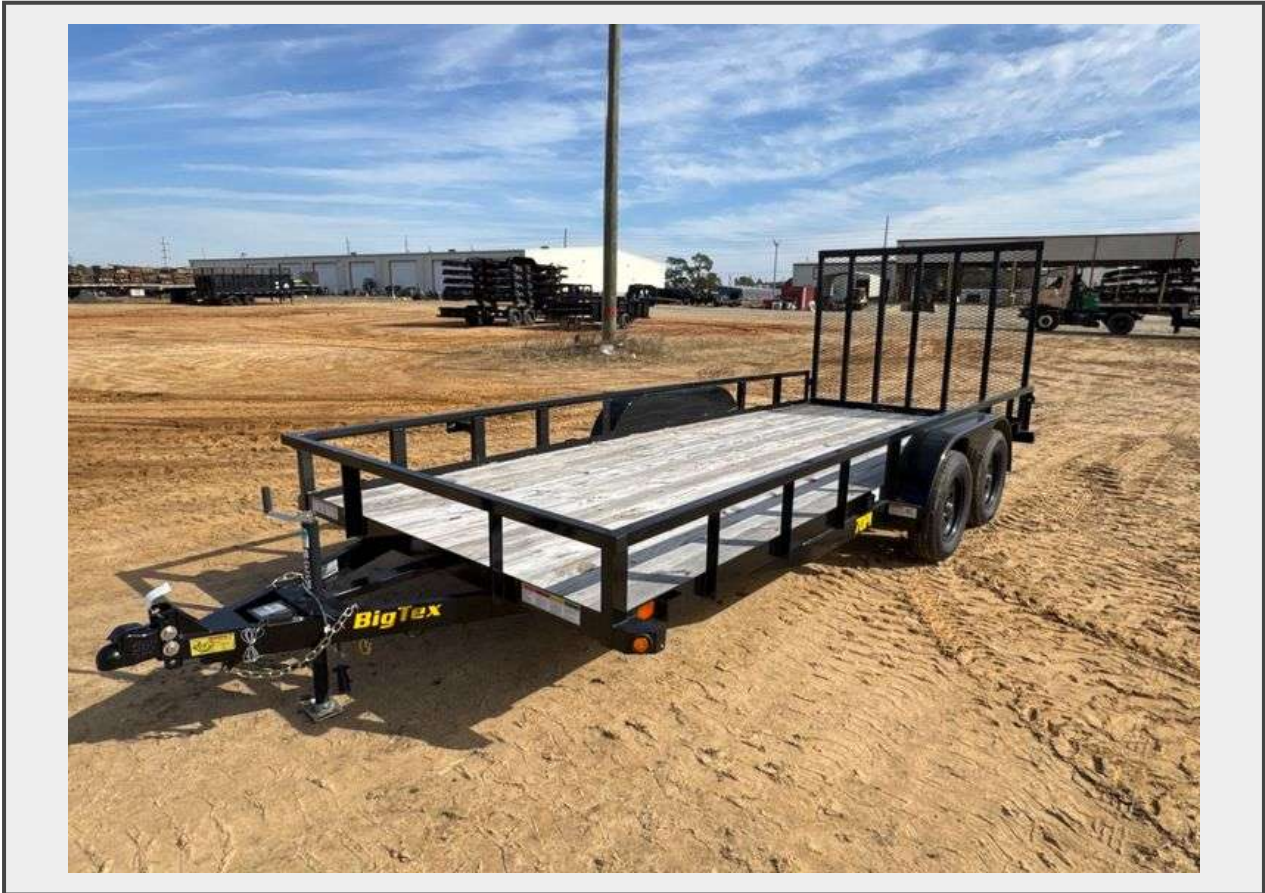


Sale Name: BigTex Trailers | Aged Stock & Warranty Return Liquidation

LOT 633 - 2022 Big Tex 70PI-18X Tandem Axle Utility Trailer with Mesh Ramp, VIN: 16V1U2228R3351743(7'x18') Ownership Transferred Via MSO



Description

Big Tex 70PI-X tandem axle utility trailer, 2022 model. Built from steel with a pressure-treated wood deck. Features a 7000 lbs GVWR (3500 lbs per axle), a rear mesh ramp, side rails, a 2-inch coupler, and tandem 15-inch tires on black steel wheels. Suitable for transporting equipment or materials. Trailer identification markings visible. Condition appears consistent with light use.

Quantity: 1



<https://bids.rowellauctions.com/>