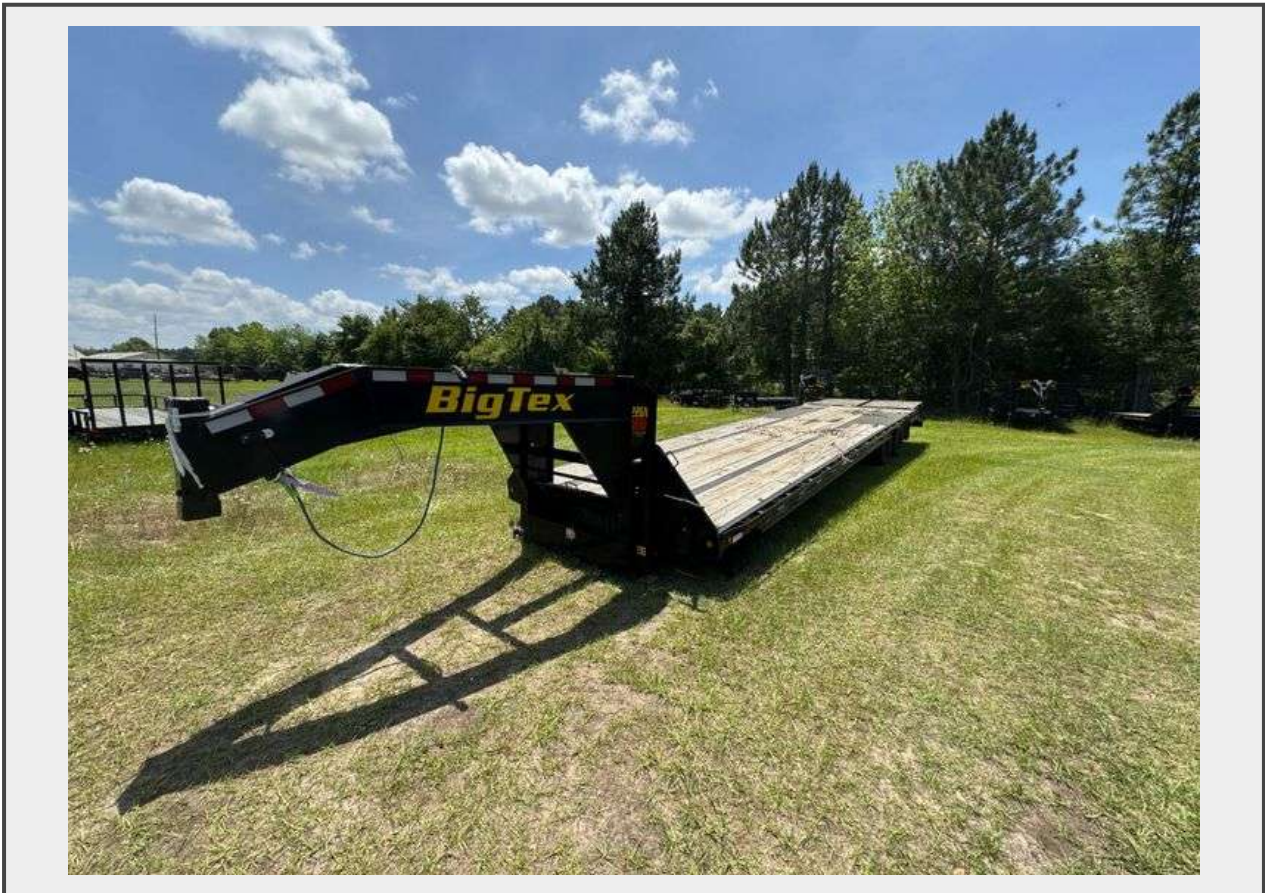


Sale Name: BigTex, B Wise & Orange Line Trailers | Dumps • Flatbeds • Utility Trailers

LOT 806 - 2021 BigTex 22GN-30BK+5MR Gooseneck Trailer, VIN: 16V3F4326M6084204, Salvage Title



Description

This heavy-duty trailer has dual 10,000 lb dual wheel axles with oil bath hubs, electric brakes, and 30,000 lb adjustable suspension, though this specific unit has a bent gooseneck and is missing the coupler. It features a 12" I-beam frame and treated pine flooring. The trailer includes stake pockets at 24" centers, 7-way RV plug, LED lighting, and ST235/80 R-16 Load Range E dual tires on black mod wheels with spare included.

Standard equipment includes 3/8" heavy-duty rub rails, a complete breakaway system, a front lockable toolbox, and mudflaps. Ramp configurations vary by model, with D5A models featuring 5' flip-over ramps and dovetail, while STA models offer slide-in ramps. Trailers 33' and longer include a Twist Guard and sliding winch track.

Quantity: 1



<https://bids.rowellauctions.com/>